

*Welcome
To*



Web Enabled Student Information & Management System

also known as SIS (Student Information System) &
ESIMS (Electronic Student Information Management System)

What is Web-eSIMS?

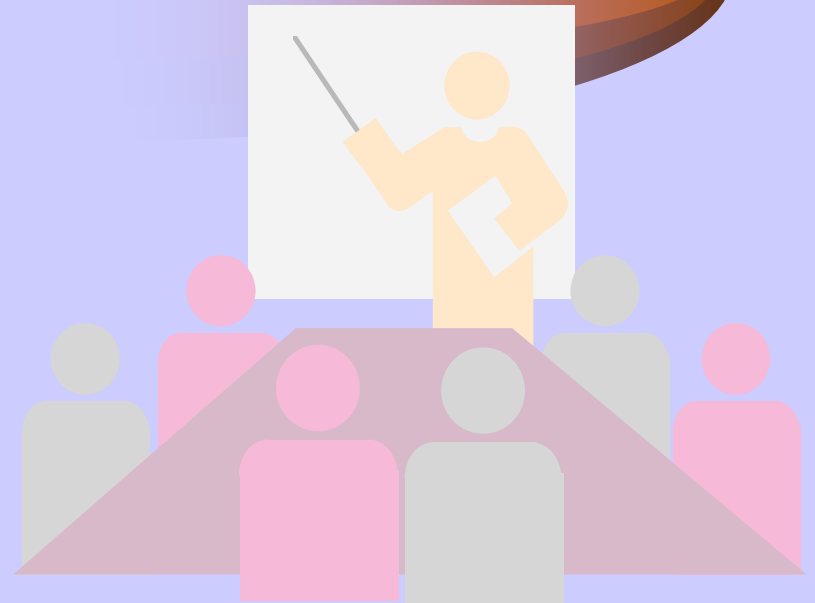


- **Web** (Internet) **enabled Student Information & Management System**
- Integrated Software Solution for Professional Colleges
- For all Management, Administrative & Academic Processes
- From Student Admission to Certification
- Regulating Society / Trust / Institutional functions
- Facilitating interactions via Internet between Staff, Students, Parents & Management

Where can Web-eSIMS be installed?



- Professional Colleges
- Universities
- Colleges
- Technical Institutes
- Educational Societies & Trusts



What does Web-eSIMS do?



- Automates processes
- Streamlines procedures
- Expedites responses
- Prevents mix-ups
- Reduces drudgery
- Eliminates errors
- Decreases Operating costs

How is Web-eSIMS installed?



- Manvish eTech Pvt. Ltd., installs and maintains this application
- Only oral / hard copy inputs required from institution personnel
- Necessary staff training

How is Web-eSIMS accessed?



- Access anytime, anyplace & any number of times
- Access on Internet / LAN / WAN
- Accessible on any computer
- Operable on any platform

Basic Web-eSIMS Modules & Functionality



- Institute Admin
- Admission Module
- Academic Module
- Examination Module

Institute Admin Module



Institution Set-up & Configuration



- Set-up Departments
- Set-up Courses
- Create Classrooms / Lab
- Define College/ Class timings
- Set-up Subjects and Teaching hours

Access Priority Level & Security



- Delineates different groups of users
- Assigns priority levels
- Provides Password type security



Admission Module

Student Admission for Management & Govt. Quota



- Online/Offline application process
- Admission process for Management / Govt.Quota
- Application fee management
- Selection of Students for Management Quota
- Admission fees set-up
- Student Branch Transfer
- Student documentation process
- Reports to prepare ID cards

Document Process ...



- Assimilation of student documents
- Classifying of documents
- Management of documents

Student & Parent Log-In creation



- Student log-in creation & user name
- Student password allotment
- Parent log-in creation
- Parent password allotment
- Local Guardian log-in creation
- Local guardian password allotment

Student Personal Information



- Student Personal Database creation
 - Contact Information
 - Academic details
 - Parent/Guardian details
 - Photograph of the students
- Options to Add, Delete and Modify by Authorized person(s)

Student Fees and Dues Management



- Defining of Fee Structure
- Student Fee collection
- Dues management
- Receipt Generation

Faculty Personnel Information



- Faculty personal particulars
- Faculty academic details
- Faculty Professional details

Student, Parent, Faculty & Management Access....



- Interface for four groups of users
- Interaction levels set-up as per customer defined parameters
- Priorities as per preceding module

Reports & Receipts



- Management of reports generated by the above mentioned modules
- Filing of all reports
- General statistics



Academic Module

Student & Parent Log-In creation



- Student log-in creation & user name
- Student password allotment
- Parent log-in creation
- Parent password allotment
- Local Guardian log-in creation
- Local guardian password allotment

Academic Calendar



- Creation of Academic Calendar
- Co-relation of events
- Visual display of events on calendar

Section formation & Student allotment



- Analysis of resources & data
- Formation of sections
- Allotment of students

Academic Scheduling of Students



- Group students as per the requirements
- Allotment of roll numbers as per requirements
- Reports (Student list class-wise / Practical batch-wise)

Practical batch formation & allotment



- Analysis of resources & data
- Formation of Practical batches
- Allotment of students to practical batches

Student Attendance Management



- Creation of Attendance(As per Time-Table)
- Attendance Entry
- Attendance view (Student-wise,Class- wise)
- Average attendance
- Attendance modify (Restricted access)
- Final Submission of Attendance

Time Table Formatting



- Shortlisting classrooms / Lab
- Shortlisting Faculty
- Shortlisting Subjects
- Scheduling Periods
- Reports

Test And Assignment



- Scheduling / Rescheduling Test and Assignment
- Announcement of Test & Assignment Syllabus / Questions
- Test and Assignment Attendance
- Entering Test and Assignment marks
- Computation of average Marks

Student, Parent, Faculty & Management Access....



- Interface for four groups of users
- Interaction levels set-up as per customer defined parameters
- Priorities as per preceding module

Access Priority Level & Security



- Delineates different groups of users
- Assigns priority levels
- Determines Scope of action initiation
- Provides Password type security

Reports & Receipts



- Management of reports generated by the above mentioned modules
- Routing of all reports
- Filing of all reports
- General statistics

Optional Modules supported by Web-eSIMS



- Task Management
- Examination Management
- Faculty Lesson Plan Schedule
- Faculty Appraisal & Feedback
- Faculty Attendance & Leave Management
- Faculty Service Register
- Library Transaction

Optional Modules supported by Web-eSIMS



- Institution Resources Scheduling / Records
- Hostel Facilities Information / Monitor
- Transportation
- Document Dispatch

Special Security Interface for Web-eSIMS



- Attendance, Identification, Verification may be effected optionally through interface of, either or both:
 - Biometric Fingerprint Authenticator Systems
 - SmartCard Systems

How does Web-eSIMS work?



- Permits hierarchy based, password enabled access & interaction between students, parents, faculty & management
- Level of access to each hierarchy is client determined and assigned
- Each user has unique password
- Manvish staff are always available for on-line as well as for site maintenance support

Work ideas on Web-eSIMS

some of the things possible ...



- Network colleges to Universities
- Network Colleges / Schools to Societies
- Control / monitor activities remotely
- More time teaching, Less on administering
- On-line parental access to students info
- Administering from off-campus

What does it cost you?



- Will have negligible cost impact
- Charges on monthly / yearly basis depending on student strength & modules / functionality opted for by the institution concerned

Manvish



- **Web-eSIMS** developed by Manvish
- Established in 1999
- Corporate Office –
 - #400, New Diagonal Road, 5th Main Road, Jayanagar 3rd Block, Bangalore 560 011.
Tel:+91-80-224 44365. Web:
www.manvish.com email: info@manvish.com

Manvish



- Senior staff are distinguished alumni and faculty from educational field
- Served in senior positions in teaching & administrative posts in different Institutes, Corporate & Multinationals
- **Web-eSIMS** and **e-Learning** content modules are designed, developed and perfected for the unique need of the educational field



For further details, please contact us at:

Manvish eTech Pvt. Ltd.,
#400, New Diagonal Road, 5th Main Road,
Jayanagar 3rd Block, Bangalore 560011.

Ph:+91-80-224 44365

Email: info@manvish.com

url: www.manvish.com



Thank You !!